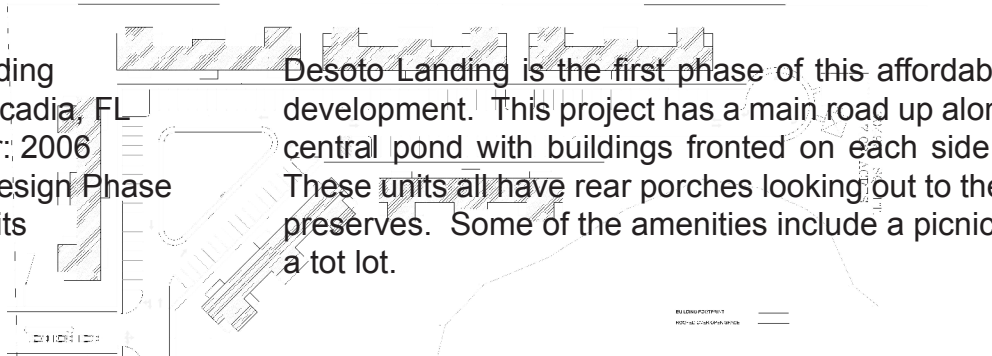
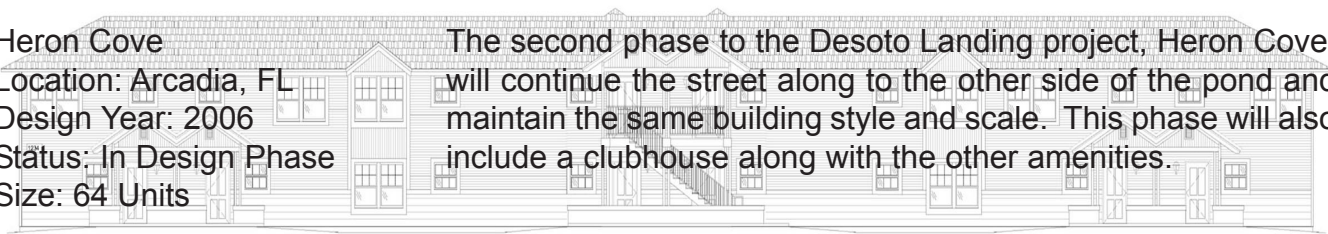


Desoto Landing  
Location: Arcadia, FL  
Design Year: 2006  
Status: In Design Phase  
Size: 48 Units



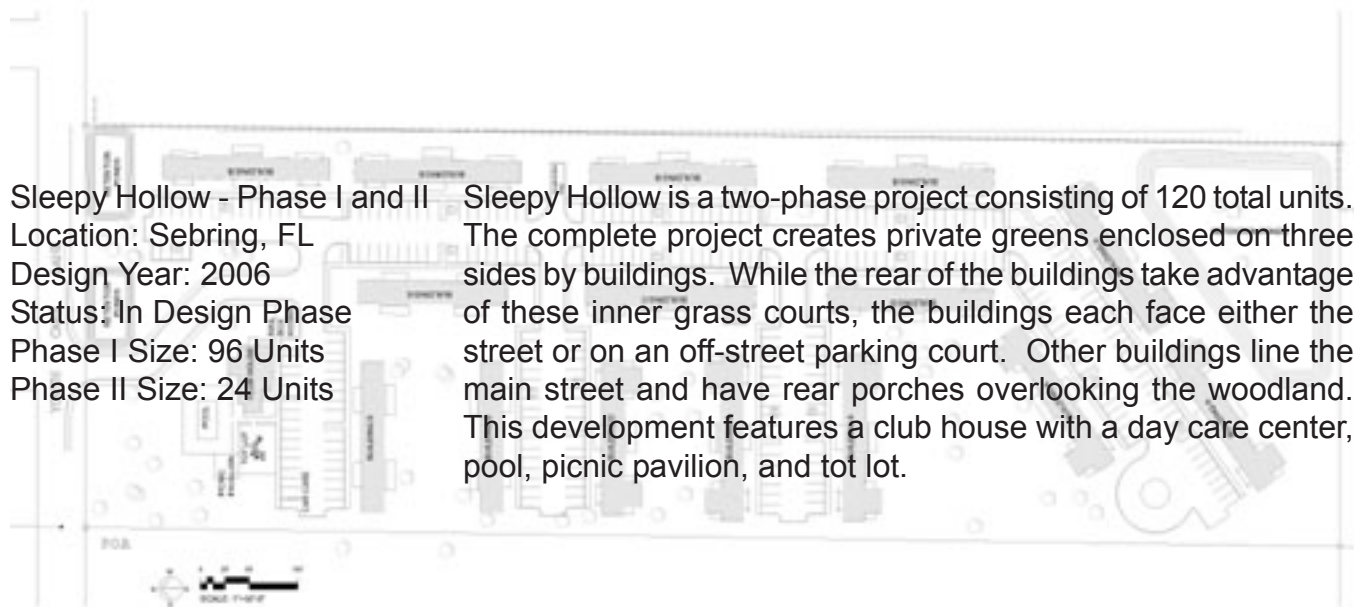
Desoto Landing is the first phase of this affordable apartment development. This project has a main road up along the side of central pond with buildings fronted on each side of the road. These units all have rear porches looking out to the pond or the preserves. Some of the amenities include a picnic pavilion and a tot lot.

Heron Cove  
Location: Arcadia, FL  
Design Year: 2006  
Status: In Design Phase  
Size: 64 Units



The second phase to the Desoto Landing project, Heron Cove, will continue the street along to the other side of the pond and maintain the same building style and scale. This phase will also include a clubhouse along with the other amenities.

Sleepy Hollow - Phase I and II  
Location: Sebring, FL  
Design Year: 2006  
Status: In Design Phase  
Phase I Size: 96 Units  
Phase II Size: 24 Units



Sleepy Hollow is a two-phase project consisting of 120 total units. The complete project creates private greens enclosed on three sides by buildings. While the rear of the buildings take advantage of these inner grass courts, the buildings each face either the street or on an off-street parking court. Other buildings line the main street and have rear porches overlooking the woodland. This development features a club house with a day care center, pool, picnic pavilion, and tot lot.